

Solution Brief

INNOVATIVE VISIBILITY INTO NETWORK AND APPLICATION MONITORING

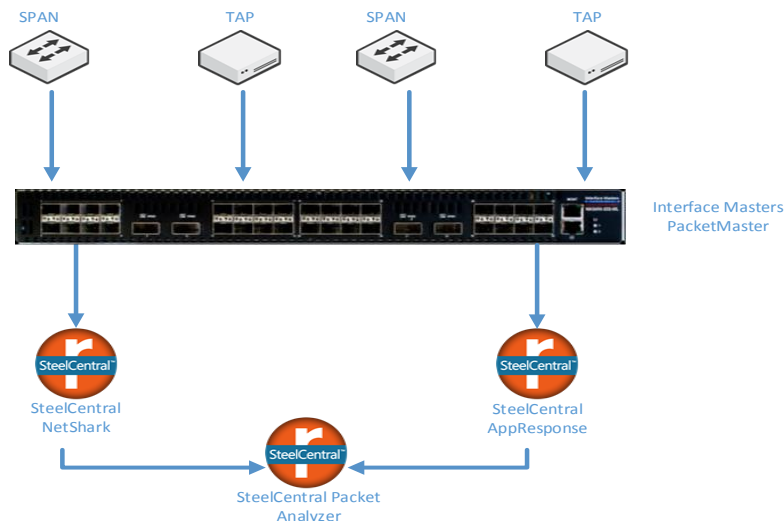
The best place to start to understand what is the root cause of a network or application performance issue is on the network. As a company grows their network, network and application performance monitoring tools need to find a way to scale with all the new data and traffic. In a data center, there can be thousands of 1-, 10-, and 40Gb ports coming off devices such as load balancers, virtualized servers, storage arrays, firewalls, routers and switches. All of these points can be monitored to look into the network. With so many potential monitoring points, it is not cost efficient or a great utilization of resources to have a tool on each traffic path and it's not essential to monitor all information.

RIVERBED STEELCENTRAL PERFORMANCE MANAGEMENT

Increasingly, application performance directly impacts business performance. Users rely on applications to reach customers, build and sell products, provide services, automate business processes, and perform almost every other task critical to the business. And as applications have become more critical, they have also become more complex. For IT teams, application performance and availability are the most visible indicators of their success.

As well, the network represents the means by which you get work done. Sure, people still use their phones to communicate, but today even that doesn't work if the network is slow or out of commission. You know your company can't function without the network, but keeping it running in top-notch form is easier said than done.

Managing both your network and applications is critical to the success of an efficient workplace. By using a Riverbed SteelCentral™ AppResponse or Riverbed SteelCentral™ NetShark appliances for analysis, a network architect can have a better view of what is happening in real time on the network and even view historical events that occurred to pinpoint the problems. These tools will also help to analyze the traffic to monitor end-user experience, and speed network and application troubleshooting.



ENSURING PERFORMANCE MANAGEMENT VISIBILITY THROUGH A PACKETMASTER

When overloaded with more points in the network to monitor than tools available, a network architect has to come up with a solution to provide full visibility to the monitoring solutions. A network packet broker (NPB) such as an Interface Masters, PacketMaster™ performs key functions such as port mirroring, aggregation, packetslicing, de-duplication, timestamping, filtering and load balancing from traffic coming from a TAP or SPAN port. In this way, packets can be copied, sorted and properly distributed to the right Riverbed SteelCentral analysis solutions. Advanced features such as load balancing will allow one input port to be split up into multiple sessions and sent to several SteelCentral analysis solutions over several outputs. This is especially important when the network link to be monitored is higher bandwidth than a particular tool can handle.

Part of the Interface Masters, PacketMaster solution is Time stamping. For enhanced monitoring, as more transactions occur on a network, time stamping becomes necessary to be able to pinpoint where communication delays or latency are happening, which allows for tuning for performance. This is done by inserting an 8-byte data field at the end of the packet. The time stamping will be in sync with Global Positioning System (GPS), Precision Time Protocol (PTP) or Network Time Protocol (NTP). This addition will help to diagnose when the network was affected, and thus enhance the Riverbed SteelCentral solution.

This distribution and visibility of traffic provides the Riverbed SteelCentral solutions the information needed in an efficient manner to be able to provide the information and results to maintain the network. By teaming together in a joint solution, Riverbed and Interface Masters are able to create better visibility and create an innovative network monitoring solution.

ABOUT INTERFACE MASTERS

Interface Masters Technologies is a leading vendor in the network monitoring and visibility market including Bypass, TAP, switches and smart NICs products, based in the heart of the Silicon Valley. Interface Masters' expertise lies in Gigabit, 10GbE and 40GbE networking solutions that integrate with monitoring, inline networking, IPS, UTM, Load Balancing, WAN acceleration, and other mission-critical IT and security appliances. Flagship product lines include PacketMaster® Network Packet Broker, specialized 10GE internal server adapter cards, switches, 10Gb and 40Gb external intelligent Network TAP and Bypass and failover systems. Company Headquarters are located in San Jose, CA with satellite offices in Hong Kong and Europe.

ABOUT RIVERBED

Riverbed Technology, Inc. at more than \$1 billion in annual revenue is the leader in Application Performance Infrastructure, delivering the most complete platform for Location-Independent Computing. Location-Independent Computing turns location and distance into a competitive advantage by allowing IT to have the flexibility to host applications and data in the most optimal locations while ensuring applications perform as expected, data is always available when needed, and performance issues are detected and fixed before end users notice. Riverbed's 25,000+ customers include 97% of the Fortune 100 and 96% of the Forbes Global 100. Learn more at www.riverbed.com.



Riverbed Technology, Inc.
680 Folsom St
San Francisco, CA 94105
Tel: (415) 247-8800
www.riverbed.com

Interface Masters



Innovative Network Solutions

Interface Masters Technologies
150 East Brokaw
San Jose, CA 95112
Tel: (408) 441-0341 ext. 100
www.interfacemasters.com